

TransNet



Your Partners in Power

Oct/Nov 2019



HV JUICE

EVERYTHING • INSULATED TOOLS • CABLE LOCATOR • PANTHER TAILS • ASSET PROTECTION • HELMET WITH SAFETY SHIELD • PPE CLOTHING • HELMET WITH SAFETY SHIELD • ASSET PROTECTION • INSULATED TOOLS • CABLE LOCATOR •

THE SAFETY ISSUE

PROTECT • HV TESTING • PPE CLOTHING • HELMET WITH SAFETY SHIELD • PANTHER TAILS •



This Issue

**NEW ARC ARMOUR
HRC2/PPE2 CLOTHING**

PAGE 4

KNIPEX VDE TOOLS

PAGE 6

**VLOC3-PRO UTILITY
LOCATOR**

PAGE 7

100% NEW ZEALAND



Asset Protection by TE

PAGE 2-3

www.transnet.co.nz



BUS INSULATION & CLEARANCE REDUCTION

Busbar insulating tubing, Busbar insulating tape, Busbar insulating sheet, Busbar insulation connection covers

SUBSTATION

Bus isolation wildlife guard, Bushing connection wildlife covers, Bushing connection inspection covers, Bus connection insulating covers, MV fusion tape, MV conductor cover

OVERHEAD

MV line covers, Birdcap protection covers, Deadend & suspension clamp covers, Distribution covers for wildlife protection, Avian flight diverters

LOW VOLTAGE

LV insulation tubing, Modular busbar insulation connection covers, LV insulating covers, LV bushing covers

CONTAMINATION/FLASHOVER PREVENTION

Creepage extenders, Booster sheds, Polymeric & porcelain rigid red grano shields

FEATURES

- Easy to install
- Flame retardant materials
- Consistent, reliable installation
- High resistance to arcing & tracking
- Perfect for new or retrofit situations
- Can offer clearance reductions in many applications
- Perfect for enclosed & exposed bus work, switchgear connections, substations, & other electrical apparatus
- Excellent electrical & thermal performance
- Made from high dielectric strength, radiation crosslinked, heatshrinkable & cold applied materials
- Compatible with other insulating materials – not affected by common plasticisers used in conventional switchgear insulating materials



“TE estimates that **damage** to electrical substations could be **reduced** by as much as **80%** simply by **applying insulation**”.

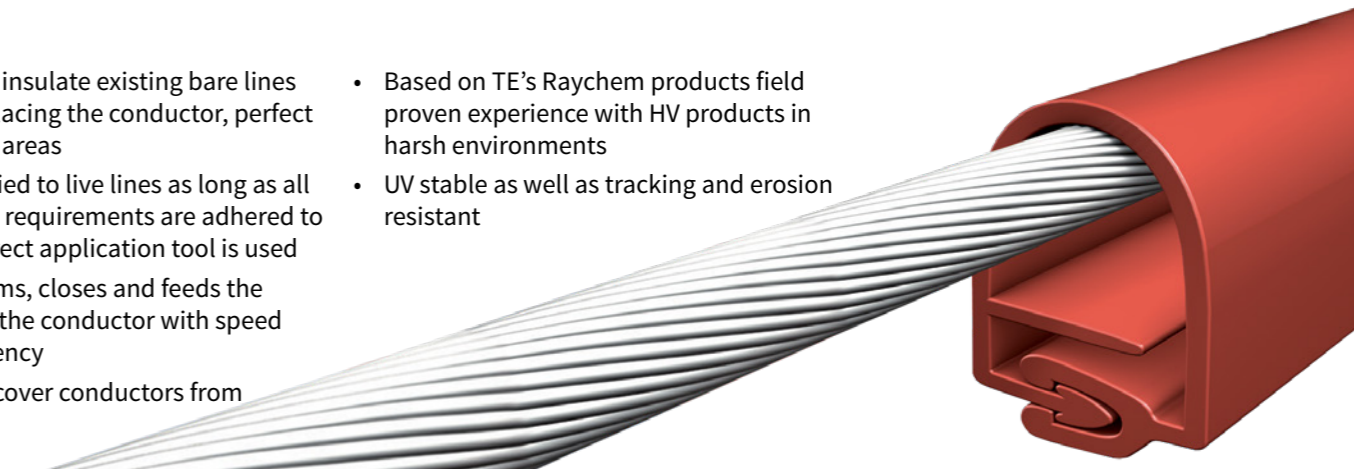
MVLC - MEDIUM VOLTAGE LINE COVER

MVLC is state-of-the-art insulation to help prevent electrical outages caused by tree/wildlife contact with lines.

FEATURES

- Designed to insulate existing bare lines without replacing the conductor, perfect for problem areas
- Can be applied to live lines as long as all live working requirements are adhered to and the correct application tool is used
- The tool forms, closes and feeds the MVLC along the conductor with speed and consistency
- Three sizes cover conductors from 16–800mm²
- Based on TE’s Raychem products field proven experience with HV products in harsh environments
- UV stable as well as tracking and erosion resistant

Cat No.	Voltage Class (kV)	Conductor Size (mm ²)	Spool Length (m)	Substation Installation Tool	Overhead Installation Tool
MVLC-14-A/U	15	UP TO 99	100	MVLC-HAND-TOOL-14	MVLC-14-TOOL-100
MVLC-14-A/241	25				
MVLC-18-A/U	15	UP TO 185	75	MVLC-HAND-TOOL-02	MVLC-18-TOOL-03-2006
MVLC-18-A/241	25				
MVLC-38-A/U	15	UP TO 800	50	MVLC-HAND-TOOL-02	MVLC-38-TOOL-03-2006
MVLC-38-A/241	25				



PROTECT THE POWER

AND THE WILDLIFE

BCAC - BUSHING CONNECTION ANIMAL COVER

FEATURES

- For use on bushings from 11 to 33kV
- Fit a wide range of bushing skirt diameters in both substation and network applications
- Fast and easy to install, no cutting required
- Can be installed live
- Feathered edges mean conductors can exit cover both vertically and horizontally
- Feathered edges act as thermal scan sites for true temperature evaluation of covered hardware
- Proven Raychem polymer material offers rugged, non tracking, UV resistant products which ensures long term performance in even the harshest environmental conditions

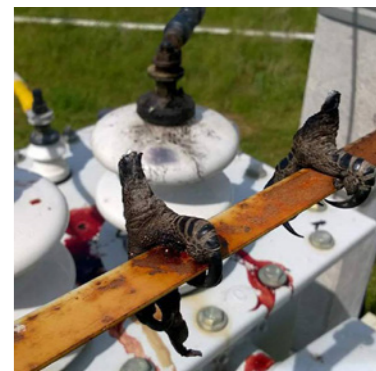
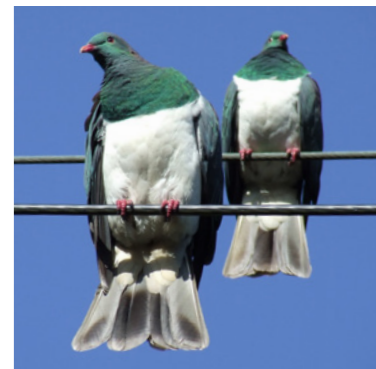
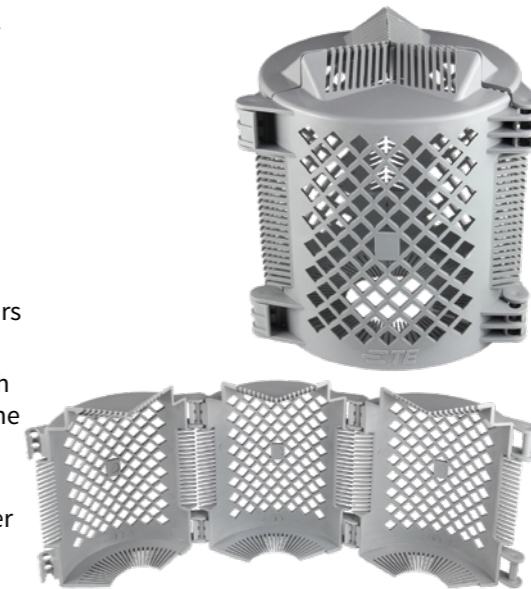


BCAC-IC - BUSHING CONNECTION ANIMAL COVER INSPECTION COVER

Designed to prevent animal caused outages on pole-top transformer bushings ranging from 15kV to 35kV.

FEATURES

- For use on bushings up to 35kV
- Visual inspection of connection and oil levels
- Conductors and leads exit easily through cover
- Robust latching and hinging mechanisms
- Reliable outage protection, proven over many years
- Fast and versatile installation, double hinged design and facility for conductors to exit from both the top and side interfaces without need to trim the cover
- High performance materials are used in the BCAC cover design, UV stabilised, track resistant polymer ensures excellent performance even in the most extreme environmental conditions



Cat No.	Colour	Insulator Core Range	Insulator Shed Range	Cover Size
BCAC-P-IC-5D/6	GREY	38–81MM	63–127MM	127MM DIA, 152MM HIGH
BCAC-G-IC-7D/12	GREY	76–124MM	95–178MM	178MM DIA, 305MM HIGH

“**Damage** to electrical substations could be **eliminated** and a **reduction** in outages achieved by proactively applying **TE’s Wildlife & Asset Protection products**.”



Raychem
from TE Connectivity



TRANSNET'S PREMIUM GRADE HRC2/PPE2 CLOTHING RANGE

ARC RATED CARGO PANTS

Elasticated Waist with Cotton Drawstring For Comfort

Rating on pocket

15 CAL HRC2

2 Large Cargo Pockets with Velcro Closure

Hard Wearing Double Layer Knee

Arc Rating 15.0 Cal HRC2/PPE2

Zip Gusset Openings On Leg For Ease Of Entry & Exit Of Safety Boots



Features

- ▶ Designed in New Zealand for our conditions
- ▶ Proprietary 215gsm Arc Armour fabric
- ▶ Very lightweight - cool to wear
- ▶ Inherently Flame Retardant, Antistatic and Arc Flash Protection
- ▶ Woven Lenzing Blend Fabric
- ▶ Twin Stitch FR Reflective Tape Application
- ▶ Water and Oil Treatment for improved soil release
- ▶ All finishes Bartacked

TTMC-WC17 ARC RATED OVERALL

Rating on pocket

8.7 CAL HRC2

2 Large Chest Pockets with Velcro Closures

2 Way Non-Conductive Zip

Arc Rating 8.7 Cal HRC2/PPE2

Adjustable Sleeve Cuffs

TTMC-WC17 Compliant

2 Large Cargo Pockets with Velcro Closure

Zip Gusset Openings On Leg For Ease Of Entry & Exit Of Safety Boots



TTMC-WC17 ARC RATED JACKET

Rating on pocket

8.7 CAL HRC2

Arc Rating 8.7 Cal HRC2/PPE2

2 Large Chest Pockets with Velcro Closures

2 Way Non-Conductive Zip

TTMC-WC17 Compliant

Adjustable Sleeve Cuffs



Your Logo Here



Get your copy of the TransNet Safety Catalogue

To view our complete range of safety products and ensure your gear is AS/NZS 4836:2011 compliant please contact your local rep or view online at www.transnet.co.nz/catalogues



ALLAN WOODS

Ph. 021 470 509
awoods@transnet.co.nz

MANAGER - SAFETY PRODUCTS

Understanding the specific challenges of his customers is key for new safety products expert Allan. He meets with networks and subcontractors to ascertain their particular risks, then provides the right product for the application, with crucial after-sale support and application training.

Allan's 30 years in the industry includes 11 in the Health and Safety sector alone, developing Arc Flash apparel that improves safety without compromising comfort. He was the perfect person to introduce TransNet's new Arc Armour range. His top advice is "don't take short cuts and always wear the correct PPE. Your family, your colleagues, and your customers depend on you".

AS/NZS 4836:2011 ARE YOU COMPLIANT?

SECTION 9

PERSONAL PROTECTIVE EQUIPMENT

This Standard states the minimum requirements for Personal Protective Equipment (PPE) for working on or near Low Voltage Installations and Equipment.

Not sure if this relates to you? Give us a call and we can advise you what PPE equipment you're required to have and whether yours is up to scratch.

WE OFFER **FREE** TESTING OF NEW TRANSNET PRODUCTS

SOME PPE REQUIRES IN-SERVICE TESTING

GLOVES • MATS • BLANKETS • BOOTS

Are you interested in reduced lead times for testing? All your TransNet gear will be ready to go into service as soon as it's in your hands.

Have a specific testing requirement? Talk to your local rep or contact customer services today.



GARRY TUCKER

Ph. 021 986 691
gtucker@transnet.co.nz

TEST & MEASUREMENT SPECIALIST

Our new Test & Measurement Specialist Garry works with customers such as electricity supply network owners and contractors to help supply them with safety equipment and carry out testing of HV switchgear. He believes all equipment needs to be safe to use and fit for the job it is intended to do, and does whatever he can to ensure it is.

With 35 years of experience in the electricity distribution industry and as a registered Electrical Inspector Garry knows his stuff. He notes that safe practice includes not only selecting the right equipment for use in LV & HV situations, but also in undergoing appropriate training in the safe use of instruments and safety equipment.



Insulated tools are a matter of trust

Professionals trust their tools. This trust is vital when working on electrical installations. In this case, the electrician holding the pliers is also holding their life in their hands. Our insulated tools therefore not only meet statutory requirements, but also offer the greatest possible safety, reliability and performance.



Guaranteed individually checked

Every insulated tool undergoes, one by one, a dielectric strength at 10,000V AC before we sell it. This means that work in the area up to 1,000V AC has a safety buffer of ten times the permitted maximum limit. Other procedures check the reliability of the insulation towards heat, cold, tensile

and impact force. In addition to the KNIPEX quality assurance team, external institutes and test centres such as the VDE guarantee that all VDE criteria have been satisfied. We stand by this responsibility with our name on the insulation of KNIPEX tools.



KP7406200 High Leverage Diagonal Cutting Pliers

FEATURES

- Integrated forged axle for heavy duty cutting
- Suitable for all types of wire including piano wire
- High cutting performance with minimum effort
- Precision cutting edges additionally induction-hardened
- Chrome vanadium heavy-duty steel, forged, multi stage oil-hardened

KP8726250 Cobra Hitech Pump Plier

FEATURES

- 1000V VDE dual component handles
- Chrome plated head
- Quick set adjust, 24 adjustment positions

KP0206225 High Leverage Combination Pliers

These pliers feature fine scored jaws, nut grip, extra long cutting edges and large bearing close to the cutting edge providing 35% less effort to cut. Powerful ergonomic handle design.

FEATURES

- 1000V VDE dual component handles
- Chrome plated head

KP9516200 Twin Cut Cable Shear

FEATURES

- 1000V VDE dual component handles
- Chrome plated head
- Precision ground blades for smooth cutting without crushing and deformation of cables



Cat No.	Capacity	Length (mm)
KP7406200	4.2MM DIA CU/AL. 2.5MM DIA HARD WIRE	200
KP8726250	UP TO 50MM	250
KP9516200	20MM DIA, 70MM ² CU/AL	200
KP0206225	14MM DIA, 25MM ² CU/AL. 2.5MM DIA HARD WIRE	225





VLOC3-PRO

UTILITY LOCATOR

FEATURES

- Eight passive locate modes
- Color-coded EM distortion warnings
- Cloud-based data warehousing
- Internal data logging
- Configurable frequencies from 16Hz to 200kHz
- 50 million records including depth, current, frequency, mode, gain setting, & signal strength (GPS coordinates, date & time if Bluetooth active)
- Audio & mechanical vibration alerts can be configured to warn for shallow depth, overload, overhead cables, & excessive swinging
- IP65 & NEMA 4 rated

MODES

- Classic Locate (bar graph)
- Transverse Graph
- Plan View (omni-directional)
- Vector Locate (lateral position & depth)
- Sonde Locate

OPTIONAL EXTRAS

- Bluetooth module
- Plug-in EMS marker locator
- Radio link to receiver & transmitter



Standard set, other options available



Weatherproof speaker

High visibility 4.3"/10cm LCD

USB data port

Rechargeable Li-ion battery or six x AA Alkaline

Accessory & charging socket

High impact thermoplastic (ABS) injected moulded housings

Two sets of 3D antennas

POPULAR ACCESSORIES



COMPATIBLE TRANSMITTERS



DETERMINE BEFORE YOU DIG

Could there be utilities underneath here?



We've Got You Covered Top To Tail

ErgoS Helmets & Panther Tail



TransNet New Zealand Ltd

Auckland

78 Cryers Road
East Tamaki
Auckland
NEW ZEALAND
Ph 0800 442 182
Fax 0800 442 183
PO Box 39 383
Howick, Auckland

Wellington

10 Petone Ave
Petone
Wellington
NEW ZEALAND
Ph 04 576 2530
Fax 04 576 0040
PO Box 39 383
Howick, Auckland

NEW ZEALAND

sales@transnet.co.nz

TransNet Tonga

Ma'ufanga

Small Industries
Ma'ufanga
TONGA
Ph +67 627 939
Fax +67 627 976
PO Box 2932
Nuku'alofa

TONGA

transnet@kalianet.to

ERGOS INTEC POWER HELMET WITH INTEGRATED FACE SHIELD

The ErgoS *Intec power* is a helmet with integrated face shield to protect its wearer from getting burned in case of an arc flash incident. It is tested in American "Open-Arc-test" and American "Open-Arc-test" and is a very ergonomic solution for all day work.

For the mobile electrician, once testing is done the face shield simply retracts back into the helmet, ready to be used at a moments notice.

FEATURES

- Clear/light smoke tint for easy colour determination
- Premium permanent anti-fog coating
- Helmet usable until -40°C
- Superior scratch resistance
- Improved peripheral vision

ARC PROTECTION CLASSIFICATION

- ASTM F2178: ATPV= 28 cal/cm²

DURABILITY

- 4 years

COLOUR REPRODUCTION INDEX / OPTICAL CLASS

- > 93% / Class 1

28CAL/CM²
RATED*



Real View Technology

The retractable face shield is ready to be used at a moment's notice.

CAT No. 7406501

*14 Cal/cm² also available

PANTHER TAIL

Panther Tail is a flexible conductor cover with a unique two tone design (black outside, yellow inside) for ease of visual inspection. Perfect for LV applications, Panther Tails meet the requirements of AS 4202 Class I, Appendix B.

Available by the metre in lengths up to 60m, with a special zip lock style fastening system, Panther Tails are quick and easy to install and can be cut to fit the required area exactly.

FEATURES

- Low voltage or high voltage applications
- Lightweight and easy to install
- Excellent weathering, UV, & abrasion resistance

Cat No. TPP15

15mm diameter, sold by metre

Cat No. TPP20

20mm dia, 3m lengths with interlocking ends

Cat No. TPP35

35mm dia, 3m lengths with interlocking ends

Cat No. TPP15-TL

Panther Tail installation tool



TPP15-TL



balmoral™
engineering

TransNet NZ Ltd has made every reasonable effort to ensure the accuracy of this information and it is to the best of our knowledge correct and reliable. Under no circumstances does this constitute an assurance of any particular quality or performance and users should independently evaluate the suitability of products for their desired application. All information in this publication including pricing, drawings, illustrations, images and graphic designs are reflections of our current understanding. TransNet NZ Ltd reserves the right to make any adjustment to this information at any time. Our liability for the products outlined in this publication is set forth in our standard terms and conditions of trade. In case of any potential ambiguities or questions, please contact us for clarification.

